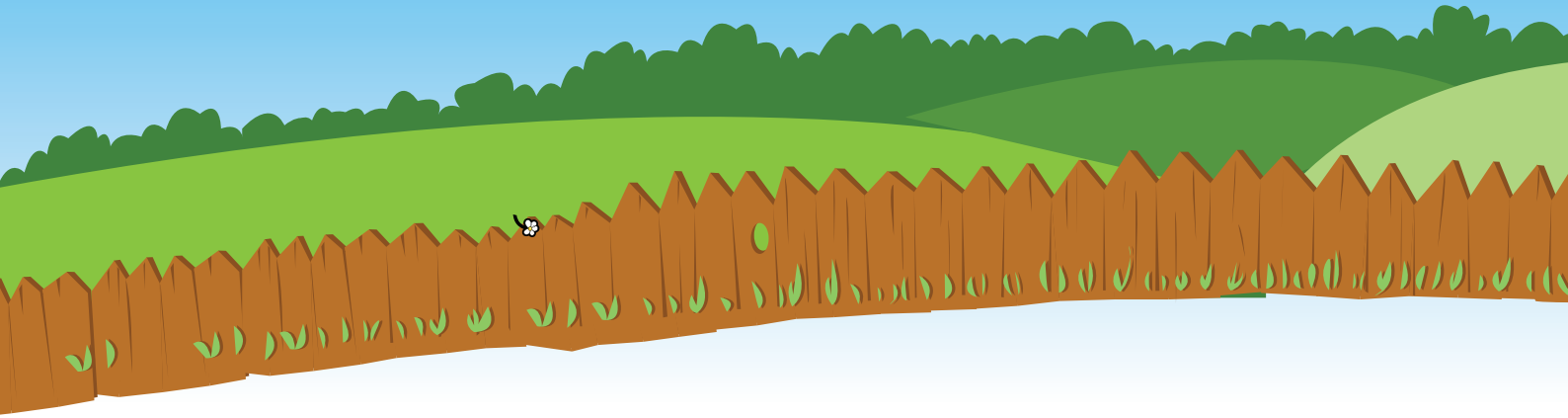


MAKE A TREE COOKIE



Use these directions to make tree cookies that will look good for years. These can be attached to string or used in a room for display purposes.

What you will need:

A thick branch (at least 4cm diameter)
A bow saw
String
Drill
Colouring pens/paint

What to do:

Step 1: Ask an adult to saw a small piece off the end of the branch so it makes a wooden disc

Step 2: Use your pens or paint to decorate the tree cookie, don't forget you can do both sides.

Step 3: Ask an adult to drill a small hole through the top of the cookie.

Step 4: Thread some string through the hole and tie in a loop.

